

AEC Weekend Seminars

Standing on a firm footing . . .

Grounding

Grounding

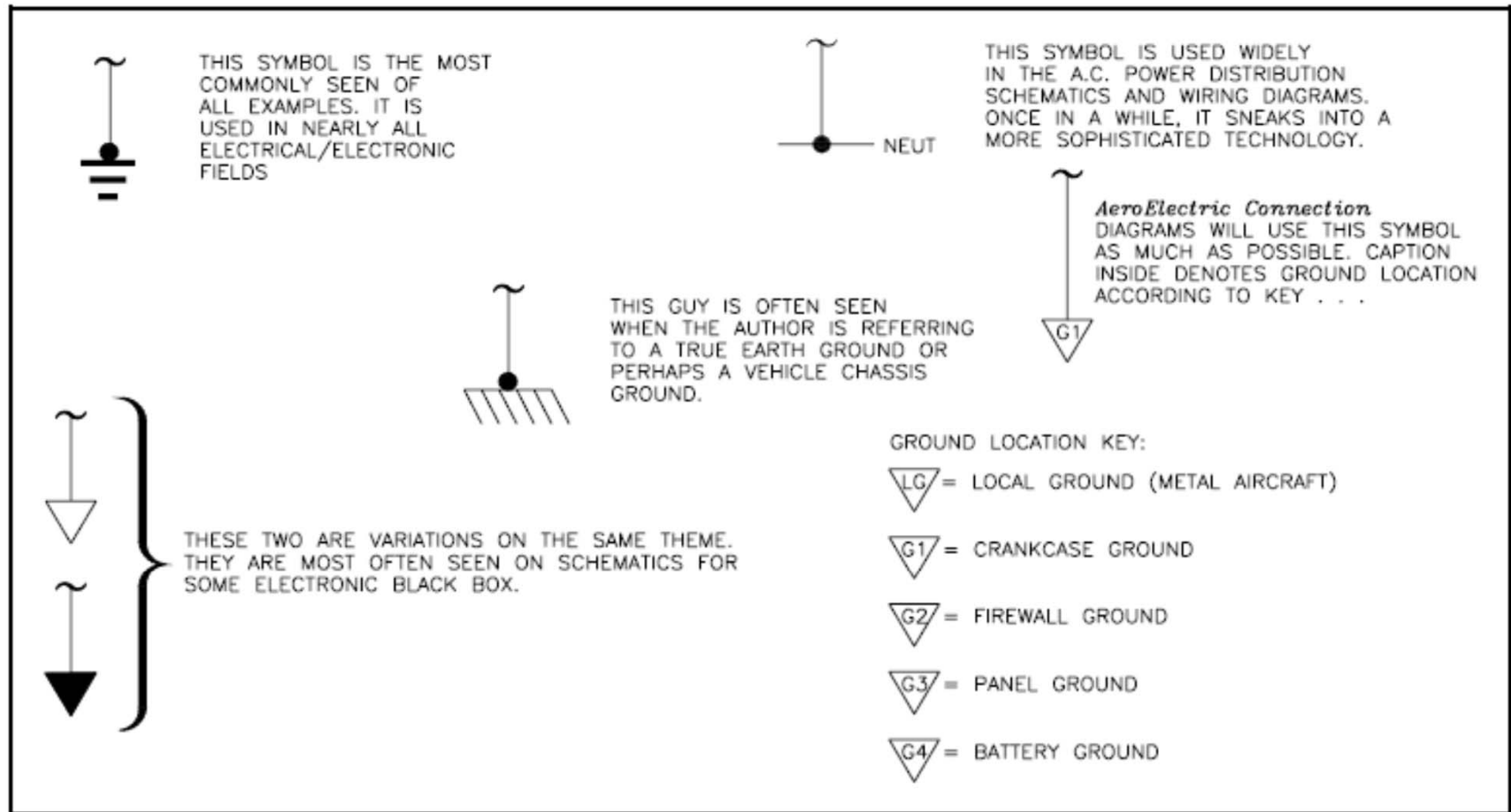
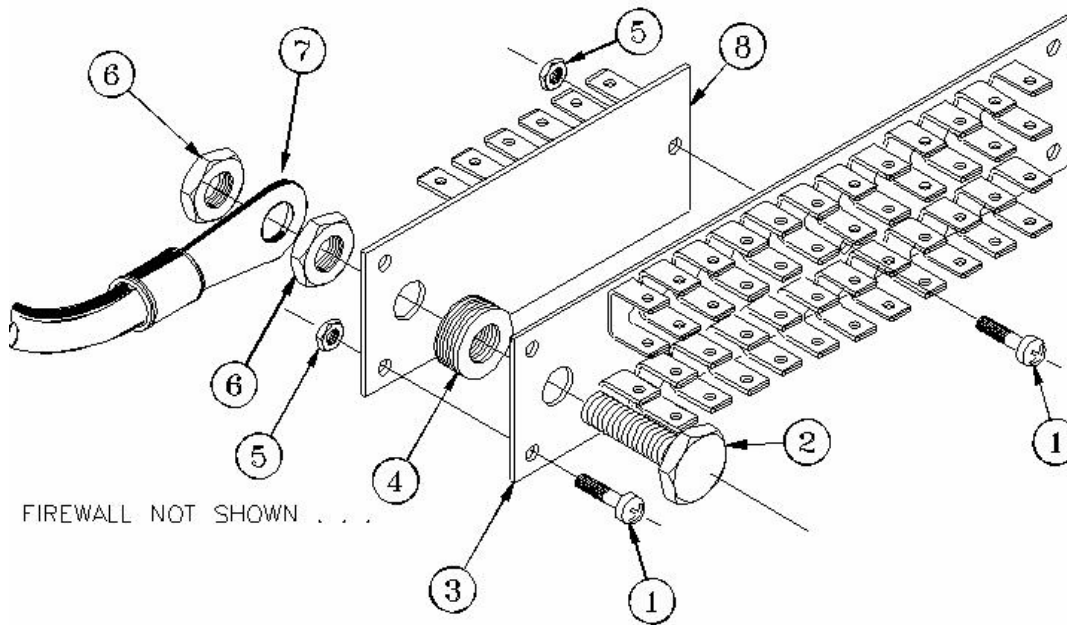


Figure 5-1. The Many Faces of a GroundSystem

The art of “grounding” goes beyond drilling a hold in local structure and bolting a wire to it . . .

AEC Weekend Seminars
Standing on a firm footing . . .

Grounding



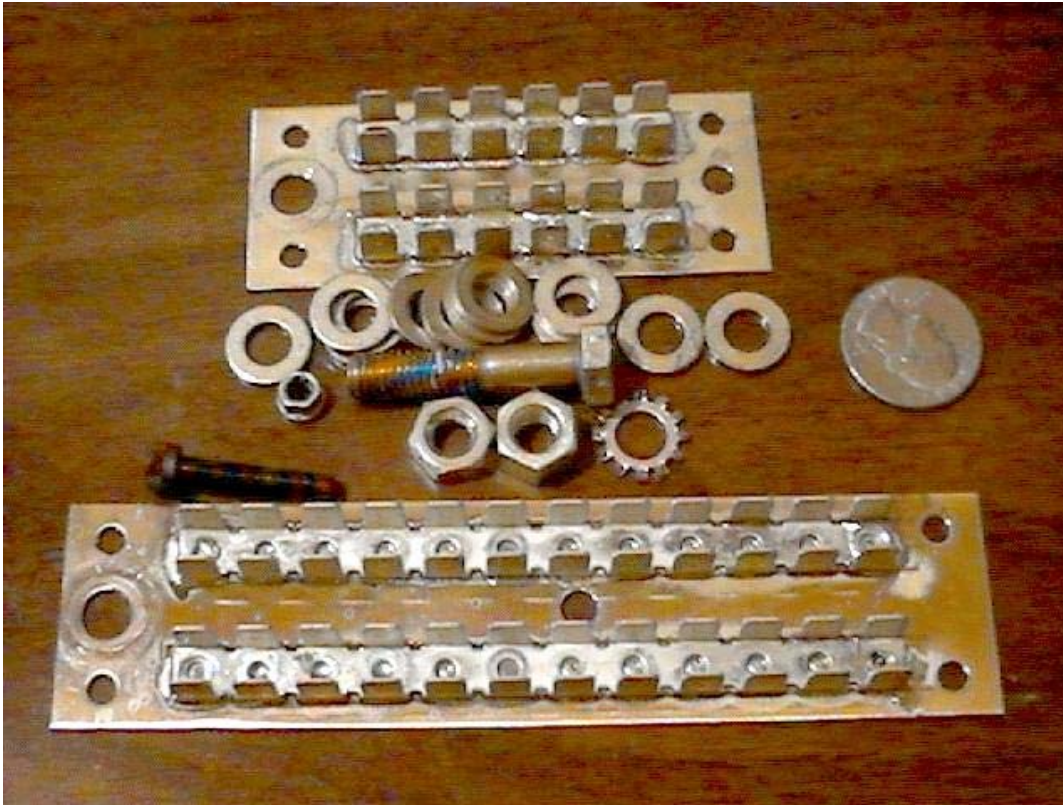
- **The AeroElectric Connection developed this firewall mounted, single point grounding system in cooperation with B&C Specialty Products.**

Implementation of this “forest of tabs” ground system all but eliminates interaction between systems (degrade performance and/or noises).

AEC Weekend Seminars

Standing on a firm footing . . .

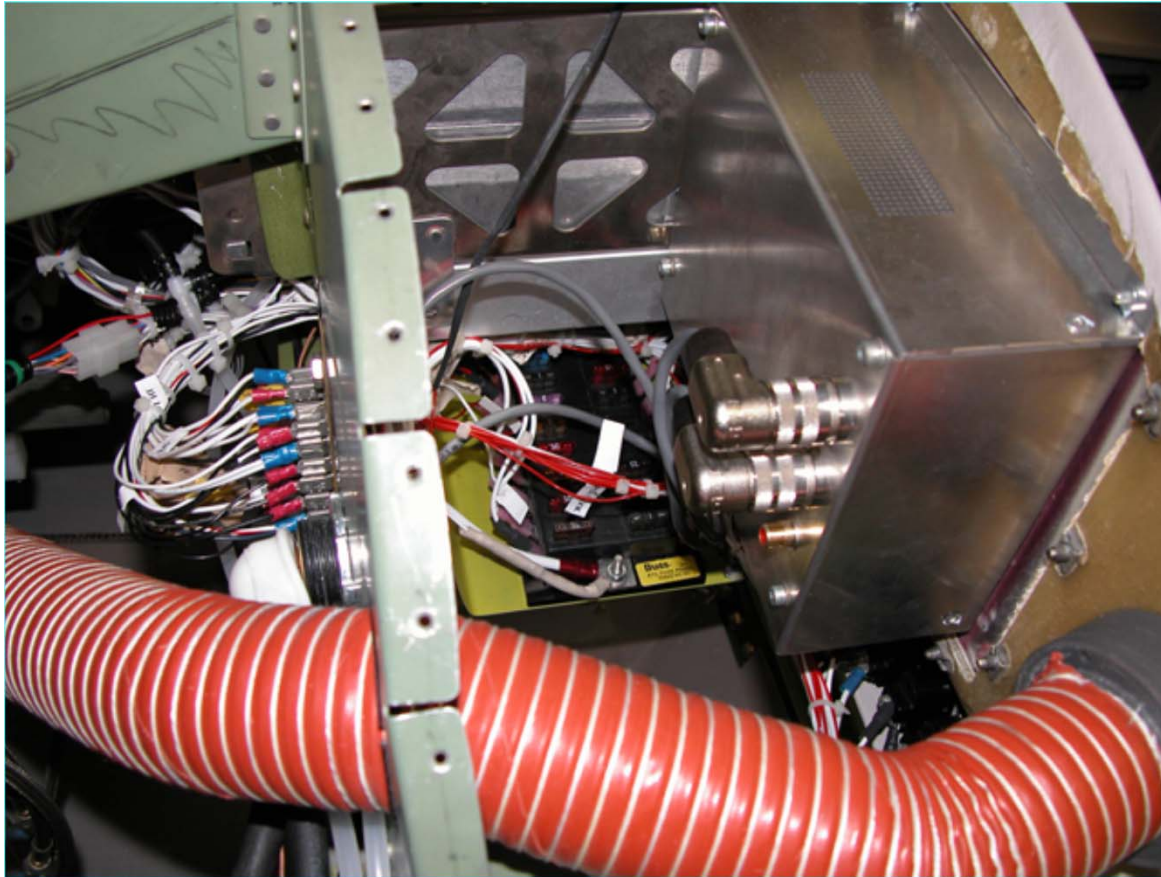
Grounding



- B&C offers combinations of 24 and 48 tab blocks along with brass through-bolt hardware for crankcase and possibly battery minus(-) grounding .

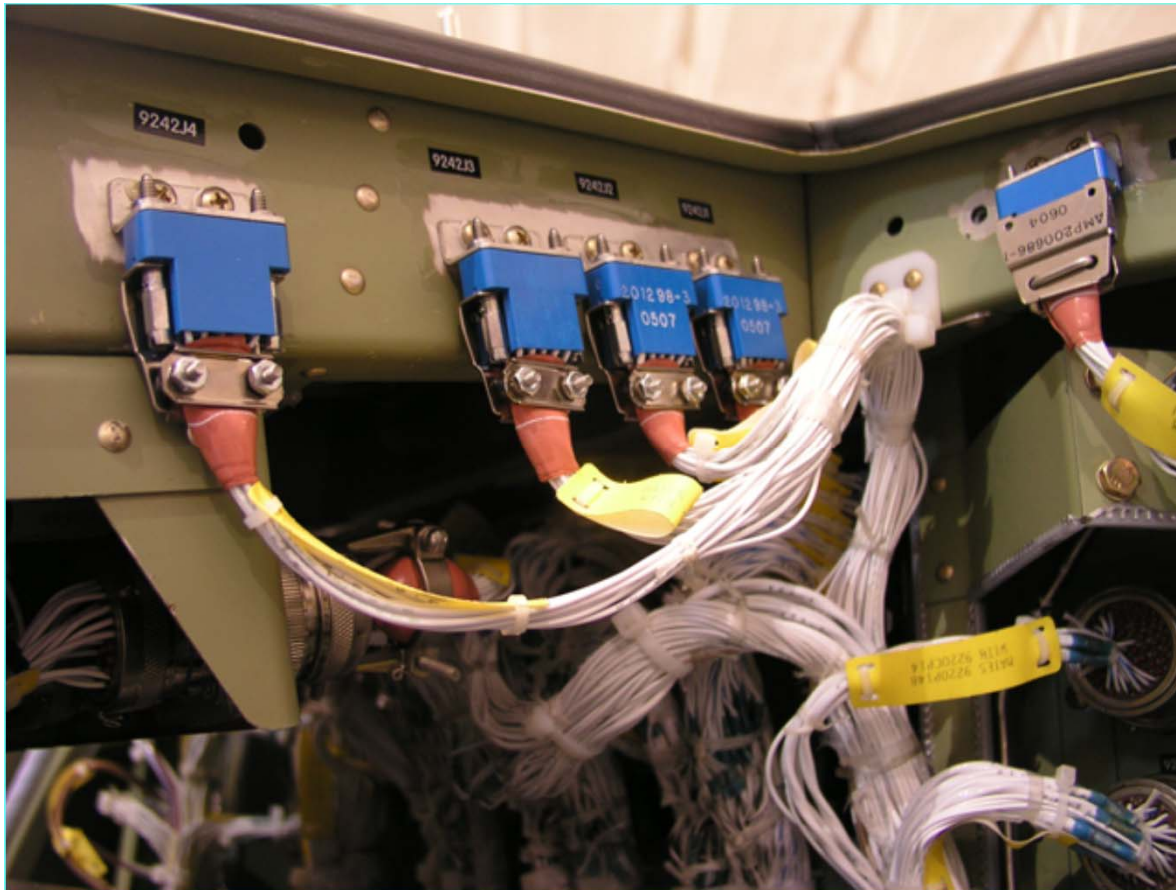
AEC Weekend Seminars
Standing on a firm footing . . .

Grounding



- Here's a view of a single point ground block in an RV

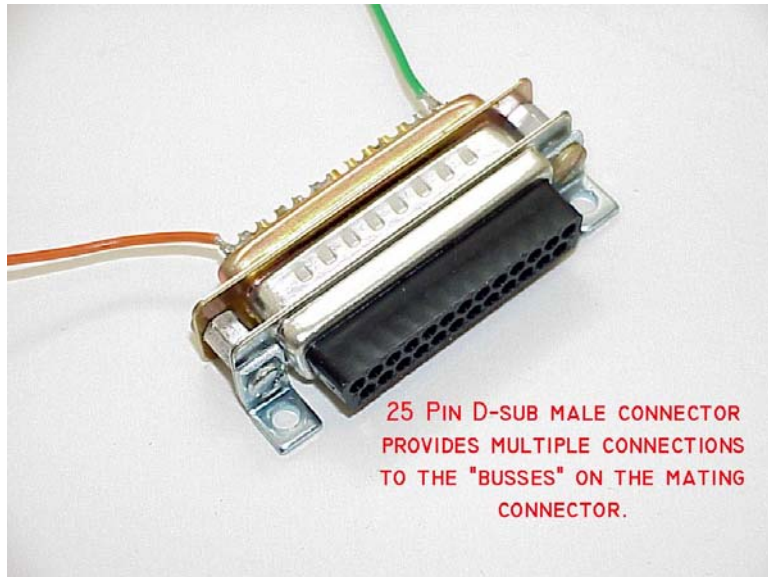
Standing on a firm footing . . .



- While single point grounding on large aircraft is impractical, the Big Guys use lots of products specific to the task of achieving high quality grounds.

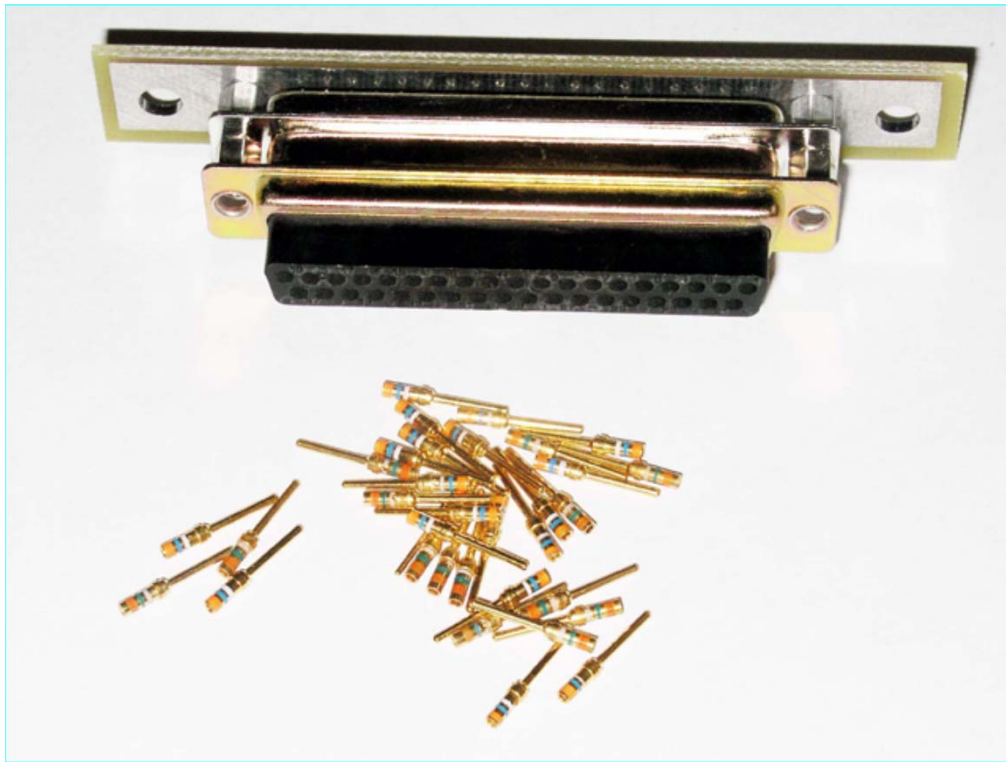
AEC Weekend Seminars
Standing on a firm footing . . .

Grounding

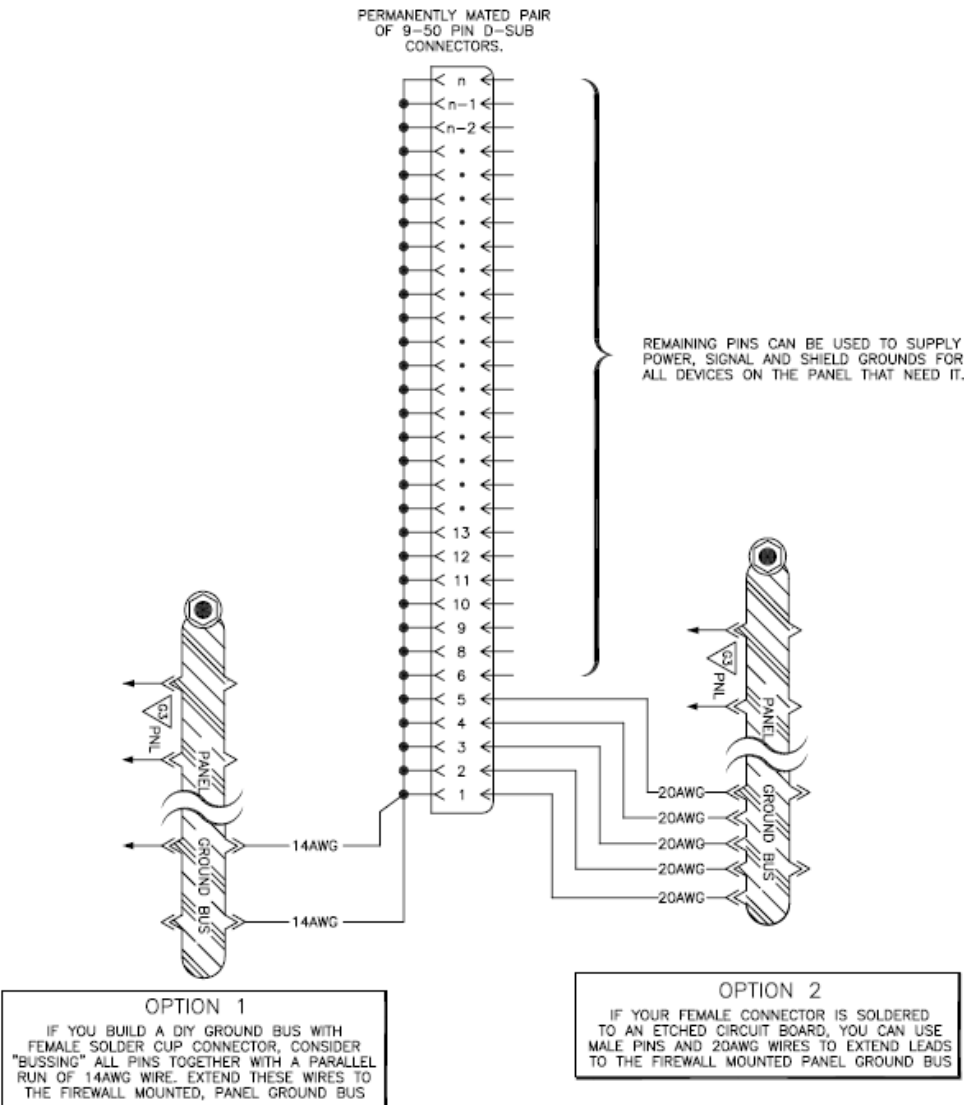


- A cluster of devices (like the instrument panel) can take advantage of an extension of the firewall ground block without violating good practice for “loop free” ground architectures . . .





- Here's an example of a ground block specifically crafted for instrument panels. It's a d-sub connector mounted on a strip of etched circuit card with all pins shorted together.



- A remotely mounted panel ground may be extended to the firewall with either a pair of chubby wires (14 AWG) soldered to the commoning block or a small bundle (5 x 20AWG) wires stuck into pins.

LOCAL BATTERY GROUNDING



INSTALLATION AND PHOTO BY LARRY MCFARLAND

USE OF SOFT WELDING CABLE IS GOOD FOR HEALTH OF BATTERY TERMINALS.

USE 1/4" OR 5/16" BOLT. CLEAN SURFACES UNDER TERMINALS AND BOTH FACES OF TERMINAL TAB WITH SCOTCHBRIGHT (NO SANDPAPER OR OTHER ROUGHENING TECHNIQUE). LIGHTLY GREASE SURFACES THAT TOUCH BEFORE ASSEMBLY. USE FLAT WASHER UNDER BOLT HEAD AND FASTENER NUT. TORQUE FASTENER TO LIMITS RECOMMENDED BY AC43-13 APPROPRIATE TO BOLT MATERIAL. FINISHED JOINT WILL BE MAINTENANCE-FREE FOR LIFETIME OF AIRCRAFT.